

Made in
Germany

Kahler

The
new look
„eco“



eco

Shelf eco 14 and stair-type sales stand eco 22



SmartWatering+

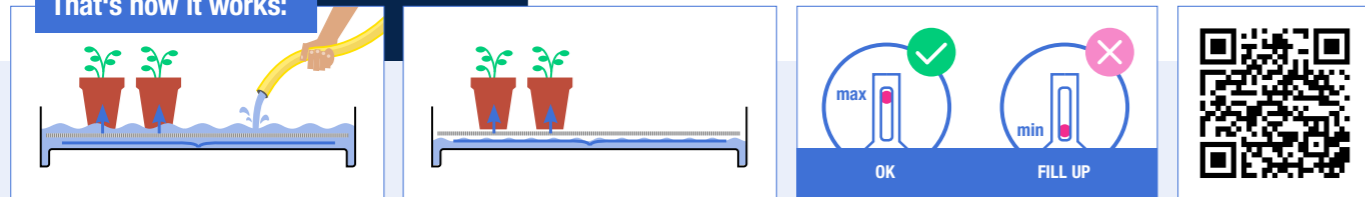


“Sustainable and economical - that’s what I like”



eco 14
Shelf SmartWatering+

That's how it works:



► Fill up with water ► Place plants on top, done ► The water level indicator always tells you when you need to fill up. ► Sufficient for up to 1 week

Shelf eco 14

Available with LED lighting



eco 14
Shelf with trays
W x D x H = 1.300 x 625 x 1.650 mm
Article no.: 103516

eco 14
Shelf with wooden inserts
W x D x H = 1.300 x 625 x 1.650 mm
Article no.: 104600

eco 14
Shelf SmartWatering+
(Sustainable plant irrigation)
W x D x H = 1.300 x 625 x 1.650 mm
Article no.: 103515

Set LED lighting for eco 14 shelf
Article no.: 104333



Shelf with trays



Shelf with wooden inserts



Shelf SmartWatering+

Sales table eco 6



eco 6
Sales table
W x D x H = 680 x 680 x 610 mm
Article no.: 104331

eco 6
Sales table
W x D x H = 600 x 600 x 510 mm
Article no.: 104332

**Wooden top made of decorative panel
for eco 6 low sales table**
W x D x H = 600 x 600 x 19 mm
Article no.: 104601

Stair-type sales stand eco 22

Accessory:
**Rear wall for eco 22
stair-type sales stand**
Article no.: 104334



Accessory:
**eco 22
Superstructure lighting**
Article no.: 104335



Accessory:
**eco 22
Retaining bracket for
labeling plates**
Article no.: 104336

**Water-repellent
against dripping
water**



eco 22
Stair-type sales stand 4-stage
W x D x H = 1.000 x 880 x 875 mm
Article no.: 104799

eco 22
Stair-type sales stand 3-stage
W x D x H = 1.000 x 900 x 635 mm
Article no.: 103534



Tilted flower display eco 24

eco 24
Tilted flower display
W x D x H = 365 x 820 x 1.180 mm (with advertising sign)
W x D x H = 365 x 820 x 710 mm (without advertising sign)
Article no.: 103557

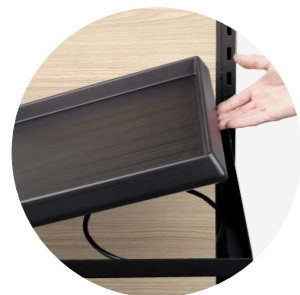


Flower column eco 27

eco 27
Flower column
W x D x H = 850 x 850 x 1.640 mm (with advertising sign)
W x D x H = 850 x 850 x 1.030 mm (without advertising sign)
Article no.: 104602



Sales stand eco 1



With rings 250 mm for
cut flower presentation



and



Irrigation trays for presentation of
potted plants and herbs



eco 1
Sales stand
W x D x H = 665 x 470 x 1.210 mm
Article no.: 101990

Display eco 2



Suitable for 60 x 40 cm
fruit and vegetable crates

eco 2
Display
W x D x H = 635 x 435 x 700 mm
Article no.: 101896




**combinable
and changeable**



Combination
eco 1 and eco 2

Product description

eco 14 - Shelf SmartWatering+




The sustainable plant irrigation system

- 3 adjustable tier frames (without rings) incl. 3 irrigation trays 1,260 x 420 mm ** SmartWatering+ ** incl. water level indicator
- 1 base podium with front panel made of sheet steel and inserted irrigation tray 1,250 x 550 mm ** SmartWatering+ ** incl. water level indicator
- 1 rear wall made of 8 mm wood decor Egger H1298 ST22 Lyon ash sand beige

Metal parts plastic-coated RAL 9005 black fine structure
Shelf feet with floor leveling screws
W x D x H = 1.300 x 625 x 1.650 mm

Article no.:
103515

eco 14 - Shelf with trays




- 3 adjustable tier frames (without rings) incl. 3 irrigation trays 1,260 x 420 mm made of black plastic 3 mm
- 1 base podium with front panel made of sheet steel and inserted irrigation tray 1,250 x 550 mm made of black plastic 3 mm
- 1 rear wall made of 8 mm decorative panel wood decor Egger H1298 ST22 Lyon ash sand beige

Metal parts plastic-coated RAL 9005 black fine structure
Shelf feet with floor leveling screws
W x D x H = 1.300 x 625 x 1.650 mm

Article no.:
103516

eco 14 - Shelf with wooden inserts




- 3 adjustable tier frames (without rings) incl. 3 wooden inserts 1,261 x 423 mm made of 19 mm decor panel wood decor Egger H1298 ST22 Lyon ash sand beige
- 1 base podium with front panel made of sheet steel and inserted decorative panel 19 mm wood decor Egger H1298 ST22 Lyon ash sand beige
- 1 rear wall made of 8 mm decorative panel wood decor Egger H1298 ST22 Lyon ash sand beige

Metal parts plastic-coated RAL 9005 black fine structure
Shelf feet with floor leveling screws
W x D x H = 1.300 x 625 x 1.650 mm

Article no.:
104600


Set LED lighting for shelf eco 14



SET LED lighting for shelf eco 14 consisting of 2 slot-in frames (1 x left/1 x right) plastic-coated RAL 9005 black fine structure screwed to the bottom of the shelf incl. 2 LED strips and power supply unit mounted ready to plug in

Article no.:
104333


eco 22 - Stair-type sales stand 3-stage



Mobile cut flower staircase made of plastic-coated steel RAL 9005 black fine structure 3 tiers with black plastic covers, shelf depth 300 mm each 4 swivel castors 75 mm, 2 locking brakes
W x D x H = 1.000 x 900 x 635 mm

Article no.:
103534


eco 22 - Stair-type sales stand 4-stage



Mobile cut flower staircase made of plastic-coated steel RAL 9005 black fine structure 4 tiers with black plastic covers, shelf depth 220 mm each 4 swivel castors 75 mm, 2 locking brakes
W x D x H = 1.000 x 880 x 875 mm

Article no.:
104799


Rear wall for eco 22 stair-type sales stand



Frame made of plastic-coated steel RAL 9005 black fine structure with slide-in U and slide-in decor panel 8 mm wood decor Egger H1298 ST22 Lyon ash sand beige screwed to sales staircase
W x D = 1.000 x 30 mm (height top edge of mounted rear wall 1.650 mm)

Article no.:
104334


eco 22 - Superstructure lighting



for eco 22 sales staircase length 1.000 mm plastic-coated RAL 9005 black fine structure incl. 1 LED strip and power supply mounted ready to plug in For attaching to the rear wall of the sales staircase (height top edge of superstructure = 2.140 mm, outreach = 800 mm)

Article no.:
104335

eco 22 - Retaining bracket for labeling plates

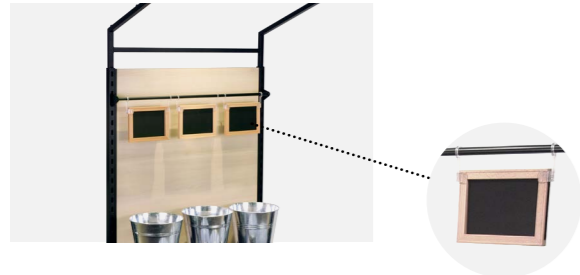


For hanging on rear wall of eco 22 sales stairs made of round tube steel plastic-coated RAL 9005 black fine structure (without labelling signs)

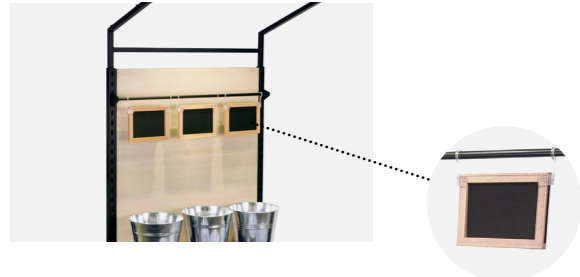
Article no.:
104336

Product description

Advertising sign beech for DIN A5 with imitation slate incl. holders (2 hooks for hanging) **Article no.:** 102024



Advertising sign beech for DIN A4 with imitation slate incl. holders (2 hooks for hanging) **Article no.:** 103482



Zinc bucket 1 SET = 10 units Zinc buckets Height 260 mm, Ø 280/200 mm **Article no.:** 102483



eco 6 - Sales table stationary made of plastic-coated steel RAL 9005 black fine structure Irrigation tray made of black plastic without drain Table legs with floor leveling screws **Article no.:** 104331 104332



Wooden top made of decorative panel wood decor Egger H1298 ST22 Lyon ash sand beige with screwed-on locking strips for placing on eco 6 low sales table **Article no.:** 104601



eco 24 - Tilted flower display mobile/folding Plastic-coated steel RAL 9005 black fine structure complete with **Article no.:** 103557



3 welded rings Ø 220 mm
3 zinc buckets height 220 mm, Ø 240/170 mm
2 solid rubber castors grey Ø 75 mm
Advertising sign DIN A4 high lacquered beech with imitation slate incl. chrome-plated bar 170 mm
W x D x H = 365 x 820 x 1,180 mm with advertising sign
W x D x H = 365 x 820 x 710 mm without advertising sign

eco 27 - Flower column Plastic-coated steel RAL 9005 black fine structure Bottom plate 500 x 500 mm with 4 swivel castors 75 mm and 2 locking brakes **Article no.:** 104602



Center column with 5 welded bucket holders, ring diameter ** 250 ** mm
complete with 5 zinc buckets 280/200 mm, height 260 mm
incl. advertising sign DIN A4 high, varnished beech with imitation slate incl. chrome-plated bar 310 mm
W x D x H = 850 x 850 x 1.640 mm with advertising sign
W x D x H = 850 x 850 x 1.030 mm without advertising sign

eco 1 - Sales stand - Mobile (4 swivel castors, 2 locking brakes) - 2 tiers height-adjustable and inclinable each with 2 welded rings Ø 250 mm **Article no.:** 101990



- 1 bottom tier
- 3 irrigation trays 610 x 410 mm
- 1 plastic rear wall with printed motif to match Egger H1298 ST22 Lyon sand beige ash wood decor
Metal parts plastic-coated in RAL 9005 black fine structure
W x D x H = 665 x 470 x 1.210 mm

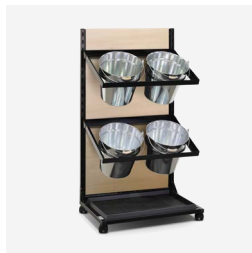
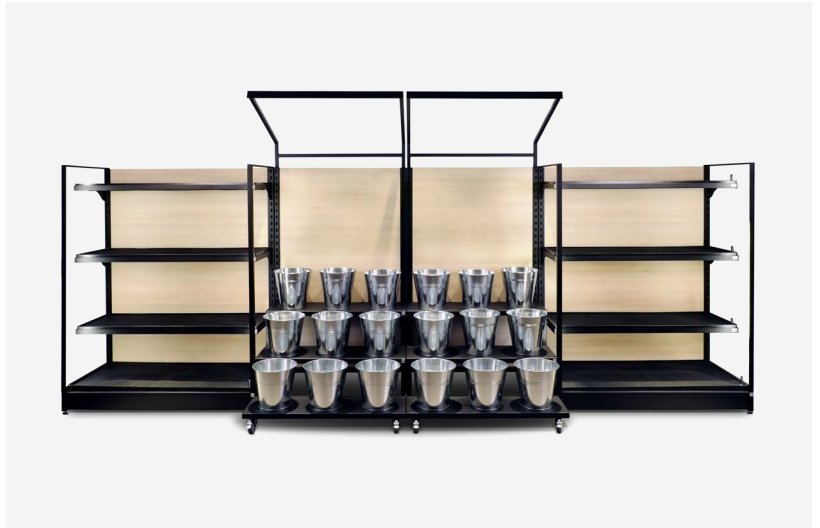
eco 2 - Display - Mobile (4 swivel castors, 2 locking brakes) - 1 irrigation tray 635 x 435 mm - 2 front sides made of plastic-coated sheet steel RAL 9005 black fine structure **Article no.:** 101896



- 2 long sides with plastic walls with printed motif matches wood decor Egger H1298 ST22 Lyon ash sand beige
W x D x H = 635 x 435 x 700 mm

Kahler

www.kahler.de



Germany

Kahler GmbH
Werkring 6
89290 Buch
Tel +49 (0)7343 9227-0
Fax +49 (0)7343 9227-79
info@kahler.de
www.kahler.de

Switzerland

HERS GmbH
Industriestrasse 17
4415 Lausen
Tel +41 (0)61 90699-99
info@hers.ch
www.hers.ch