


Made in
Germany

Kahler[®]

Perfection
in timeless
design



milano

milano 1 – System table



The **System table** can be used in a wide variety of ways thanks to exchangeable table tops.

Table frame made from 15 x 15 mm, RAL 9005 matt black, plastic-coated steel tube.

L x W x H = 700 x 500 x 400 mm
Order no.: 101891

L x W x H = 700 x 700 x 400 mm
Order no.: 101892



Table top compact laminate board in white pearl décor

L x W x H = 700 x 500 x 8 mm
Order no.: 101759

L x W x H = 700 x 400 x 8 mm
Order no.: 101760

L x W x H = 500 x 400 x 8 mm
Order no.: 101761

L x W x H = 700 x 700 x 8 mm
Order no.: 101762



milano 6 – Round table

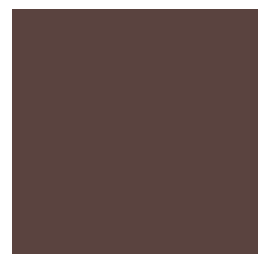


Table frame made from 15 x 15 mm, RAL 9005 matt black, plastic-coated steel tube.
Table top compact laminate board in white pearl décor

Ø x H = 800 x 410 mm
Order no.: 103111

Ø x H = 800 x 610 mm
Order no.: 103112

Ø x H = 800 x 810 mm
Order no.: 103113



milano 4 – Pedestal table

Table frame made from 15 x 15 mm,
RAL 9005 matt black, plastic-coated steel tube
with base facing
2 boards made from compact laminate board in
white pearl décor

L x W x H = 650 x 650 x 710 mm
Order no.: 103114



milano 5 – Pedestal shelf

Frame made from 15 x 15 mm,
RAL 9005 matt black, plastic-coated steel tube
with base facing
4 boards made from compact laminate board in
white pearl décor

L x W x H = 650 x 650 x 1.695 mm
Order no.: 103115





milano 3 – Counter

Counter in the stationary version.
The counter frame is made from RAL 9005 matt black, plastic-coated steel. Cladding made from multiplex boards – exterior view in white pearl décor and interior view in black pearl décor. Worktop made from compact laminate board in white pearl décor.
Standard interior equipment: Bottom plate and 1 storage compartment in black pearl décor.
Feet with unscrewable floor-compensation screws.

L x W x H = 1200 x 700 x 940 mm
Order no.: 101960

Accessories:

Sink made from stainless steel with a 20-mm outer rim, usable dimensions L 400 x W 400 x H 250 mm, position of centre of sink is 260 mm from the edge of the counter (on the users' side), 300 mm from the edge of the counter on the far right incl. wash basin facing
Order no.: 101683

Spiral-sprung sink fittings with mixer tap

incl. drill hole in the worktop for fittings;
position at the centre above the sink (installation, connections and piping are provided by the customer)
Order no.: 101042

Pass-through aperture in the worktop, contour-milled, hole diameter 250 mm, position of centre of the hole is 400 mm from the edge of the counter (on the user's side) and 300 mm from the counter edge to the left on the outside
Order no.: 103182

Pull-out waste container

L 460 x W 590 x H 620 mm made of galvanised steel plate, front powder-coated matt black RAL 9005
Order no.: 103173

Drawer with a stainless steel handle and full extension; mounted on ball bearings, usable dimensions L 400 x W 410 mm, drawer faceplate L 470 x H 170 mm with a black wood décor
Order no.: 103183

Paper dispenser for 500 mm reel
incl. fixture for the table substructure
Order no.: 101047

Paper dispenser for 800 mm reel
incl. fixture for the table substructure
Order no.: 101048

Cable feedthrough diameter 60 mm
in the worktop with black cover
(please state desired position!)
Order no.: 101060

Counter front recessed with 2 height-adjustable storage compartments, depth 190 mm, black
Order no.: 103184





milano 2 – Shelf

... available in different sizes and arrangements.
Clear dimensions of the individual shelf fields are
each L 485 x W 350 x H 485 mm.

Frame made from 15 x 15 mm,
RAL 9005 matt black, plastic-coated steel tube
with base facing

Shelf boards made from compact laminate board in white pearl décor

Shelf with 15 fields
L x W x H = 1.515 x 383 x 2.605 mm
Order no.: 103175

Shelf with 12 fields
L x W x H = 1.515 x 383 x 2.105 mm
Order no.: 103176

Shelf with 9 fields
L x W x H = 1.515 x 383 x 1.605 mm
Order no.: 103177

Shelf boards made from RAL 9005 matt black, plastic-coated steel sheet

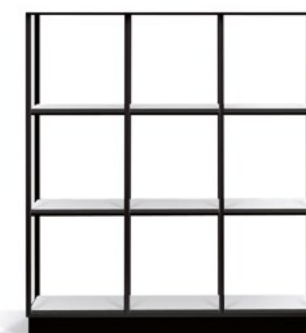
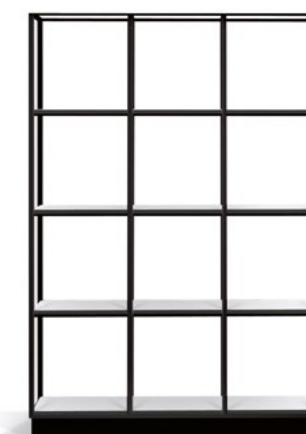
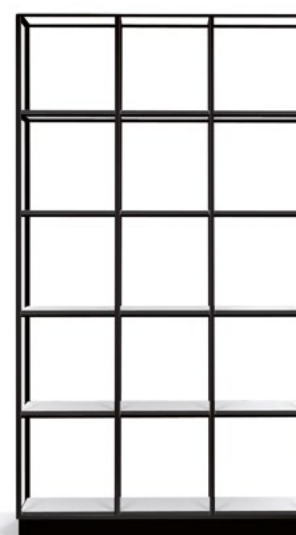
Shelf with 15 fields
L x W x H = 1.515 x 383 x 2.605 mm
Order no.: 103178

Shelf with 12 fields
L x W x H = 1.515 x 383 x 2.105 mm
Order no.: 103179

Shelf with 9 fields
L x W x H = 1.515 x 383 x 1.605 mm
Order no.: 103180

Accessories:

Irrigation tray made from black plastics
for inserting in a shelf field
L x W x H = 500 x 350 x 15 mm
Order no.: 103181



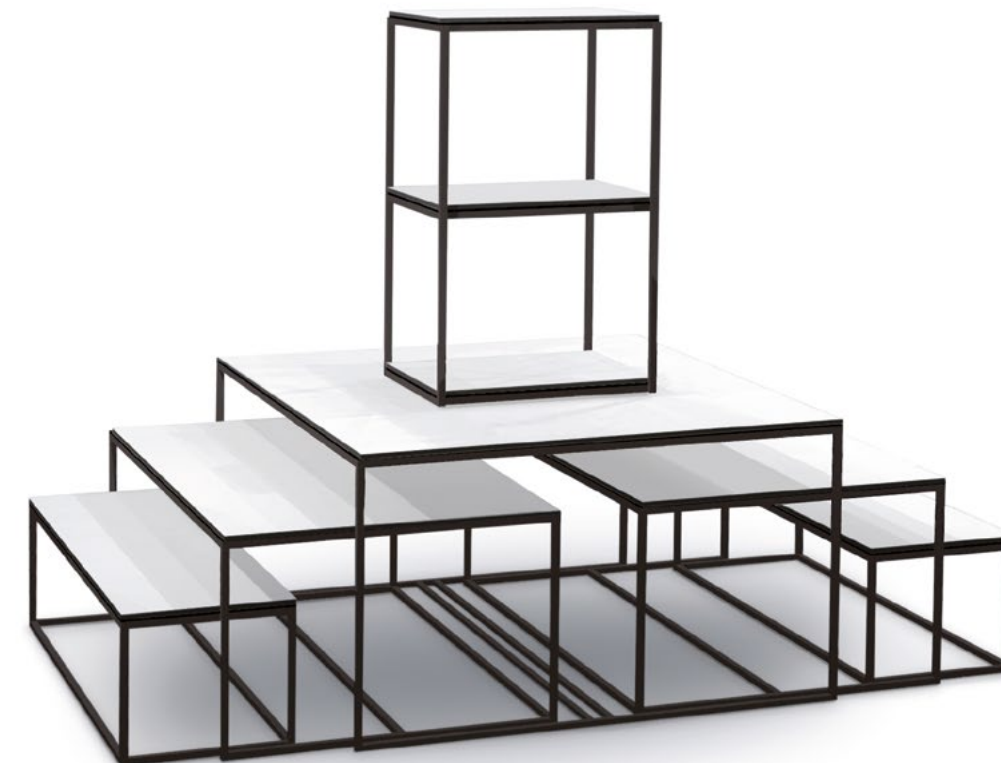
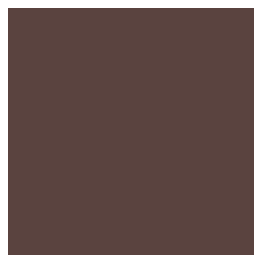
milano 7 – Combination of tables

Table frame made from 15 x 15 mm,
RAL 9005 matt black, plastic-coated steel tube.
Table top compact laminate board in white pearl décor

L x W x H = 600 x 600 x 510 mm
Order no.: 103108

L x W x H = 550 x 550 x 460 mm
Order no.: 103109

L x W x H = 500 x 500 x 410 mm
Order no.: 103110



milano 8

Presentation table

Table frame made from 15 x 15 mm,
RAL 9005 matt black, plastic-coated steel tube.
Table top compact laminate board in white pearl décor

L x W x H = 1.190 x 1.120 x 600 mm
Order no.: 103116

L x W x H = 1.130 x 770 x 450 mm
Order no.: 103117

L x W x H = 1.070 x 420 x 300 mm
Order no.: 103118

Top shelf

Frame made from 15 x 15 mm,
RAL 9005 matt black, plastic-coated steel tube
3 shelf boards made from compact laminate board
in white pearl décor
L x W x H = 570 x 450 x 830 mm
Order no.: 103119



www.kahler.de



Germany

Kahler GmbH
Werkring 6
D-89290 Buch

Tel. +49 (0)7343 9227-0
Fax +49 (0)7343 9227-79
E-mail info@kahler.de
Web www.kahler.de

Switzerland

HERS GmbH
Industriestrasse 17
CH-4415 Lausen

Tel. +41 (0)61 90699-99
E-mail info@hers.ch
Web www.hers.ch