

Made in  
Germany

**Kahler**

High  
quality and  
a modern  
look



# sales tables



### Sales tables

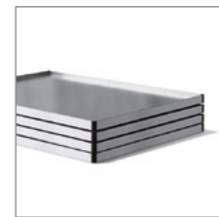
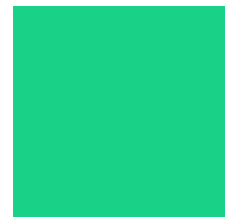
All the sales tables are made from aluminium and are available in a mobile and a stationary version.

#### Stationary version:

- aluminium substructure
- wind-down feet, height-adjustable up to 70 mm
- folding table legs as standard

#### Mobile version:

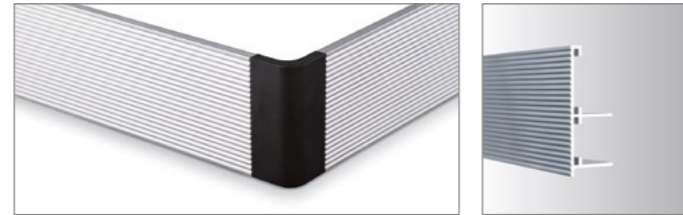
- substructure made from hot-dip galvanized steel, with additional H-brace
- 4 castors, 125 mm Ø made from grey solid rubber (non-marking) with 2 locking brakes
- folding table legs as standard



The legs fold up to enable tables to be stacked outside the season.  
The folding function depicted makes it easy for one person to operate.

### DS sales table

DS-type table available with aluminium insertion tray



Aluminium profile, single-walled, narrow  
Profile height, 70 mm  
Incorporated, rounded table corners made from black reinforced plastic

### DE sales table

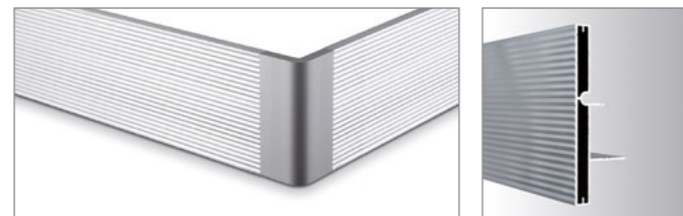
DE-type table available with ebb/flow tray, aluminium insertion tray or "2-in-1" capillary irrigation



Aluminium profile, single-walled  
Profile height, 120 mm  
Fitted rounded corners made from solid, anodised aluminium; elegant and impervious to knocks

### HK sales table

HK-type table available with ebb/flow tray, aluminium insertion tray or "2-in-1" capillary irrigation



Double-walled aluminium profile (twin-wall profile)  
Profile height, 120 mm  
Fitted rounded table corners made from solid, anodised aluminium; elegant and impervious to knocks

### Sales table with plastic tray with drain

(ebb/flow tray without a bonded seam)  
Height of all tables 800 mm – other heights on request

Dimensions Internal dimensions of trays L x W x H in mm	Sales table type DE DEER mobile Order no.	Sales table type DE DEES stationary Order no.	Sales table type HK HKER mobile Order no.	Sales table type HK HKES stationary Order no.
2,040 x 1,000 x 40	G2 1462.0 DEL 125	G2 1462.0 DE0 000	G2 1462.1 HEL 125	G2 1462.1 HE0 000
2,500 x 1,200 x 40	G2 1463.0 DEL 125	G2 1463.0 DE0 000	G2 1465.2 HEL 125	G2 1465.2 HE0 000
2,500 x 1,250 x 40	G2 1465.2 DEL 125	G2 1465.2 DE0 000	G2 1465.1 HEL 125	G2 1465.1 HE0 000
2,500 x 1,500 x 40	G2 1466.0 DEL 125	G2 1466.0 DE0 000	G2 1465.3 HEL 125	G2 1465.3 HE0 000
3,000 x 1,500 x 40	G2 1467.3 DEL 125	G2 1467.3 DE0 000	G2 1467.3 HEL 125	G2 1467.3 HE0 000
External dimensions of table = internal dimensions of trays L/W + 50 mm			External dimensions of table = internal dimensions of trays L/W + 30 mm	

### Sales tables with aluminium insertion tray

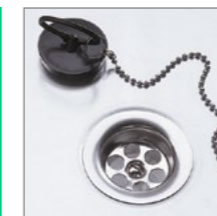
Height of all tables 800 mm – other heights on request

Dimensions Internal dimensions of trays L x W x H in mm	Sales table type DE DEER mobile Order no.	Sales table type DE DSWS stationary Order no.	Sales table type DE DEWR mobile Order no.	Sales table type DE DEWS stationary Order no.	Sales table type HK HKWR mobile Order no.	Sales table type HK HKWS stationary Order no.
940 x 940 x 30	G2 1433.1 SWL 125	G2 1433.1 SW0 000	G2 1433.1 DWL 125	G2 1433.1 DW0 000	G2 1433.1 HWL 125	G2 1433.1 HW0 000
1,190 x 1,190 x 30	G2 1433.2 SWL 125	G2 1433.2 SW0 000	G2 1433.2 DWL 125	G2 1433.2 DW0 000	G2 1433.2 HWL 125	G2 1433.2 HW0 000
1,250 x 1,250 x 30	G2 1434 SWL 125	G2 1434 SW0 000	G2 1434 DWL 125	G2 1434 DW0 000	G2 1434 HWL 125	G2 1434 HW0 000
1,440 x 1,440 x 30	G2 1433.4 SWL 125	G2 1433.4 SW0 000	G2 1433.4 DWL 125	G2 1433.4 DW0 000	G2 1433.4 HWL 125	G2 1433.4 HW0 000
1,190 x 770 x 30	G2 1433.3 SWL 125	G2 1433.3 SW0 000	G2 1433.3 DWL 125	G2 1433.3 DW0 000	G2 1433.3 HWL 125	G2 1433.3 HW0 000
1,940 x 940 x 30	G2 1433.5 SWL 125	G2 1433.5 SW0 000	G2 1433.5 DWL 125	G2 1433.5 DW0 000	G2 1433.5 HWL 125	G2 1433.5 HW0 000
2,040 x 1,000 x 30	G2 1432 SWL 125	G2 1432 SW0 000	G2 1432 DWL 125	G2 1432 DW0 000	G2 1432 HWL 125	G2 1432 HW0 000
2,440 x 1,190 x 30	G2 1433.6 SWL 125	G2 1433.6 SW0 000	G2 1433.6 DWL 125	G2 1433.6 DW0 000	G2 1433.6 HWL 125	G2 1433.6 HW0 000
2,500 x 1,250 x 30	G2 1435 SWL 125	G2 1435 SW0 000	G2 1435 DWL 125	G2 1435 DW0 000	G2 1435 HWL 125	G2 1435 HW0 000
2,940 x 1,440 x 30	G2 1433.7 SWL 125	G2 1433.7 SW0 000	G2 1433.7 DWL 125	G2 1433.7 DW0 000	G2 1433.7 HWL 125	G2 1433.7 HW0 000
External dimensions of table = internal dimensions of trays L/W + 20 mm			External dimensions of table = internal dimensions of trays L/W + 50 mm		External dimensions of table = internal dimensions of trays L/W + 30 mm	

Tables in other dimensions on request



HS valve for ebb/flow irrigation  
Order no.: GO 0492 000



Tables with an inserted aluminium tray have a drain as standard.  
The drain with 1" thread is deep-drawn and screwed in, a quality feature!



If it is moved a lot, it is advisable to fit an additional H-brace  
Order no.: G4 0494 HVO

## Sales table with capillary irrigation and "2-in-1" irrigation tray



With the new 2-in-1 table you can both water by hand and retain the water conventionally and still benefit from the advantages of capillary irrigation; after all, it can do both!  
The water tank is integrated into a plastic irrigation tray and is invisible from the outside. So it's up to you to decide whether you water every day or irrigate with the integrated capillary irrigation. Or both. Or alternately. Or ... however you like.

Folding table legs are standard; available in a stationary or mobile version.

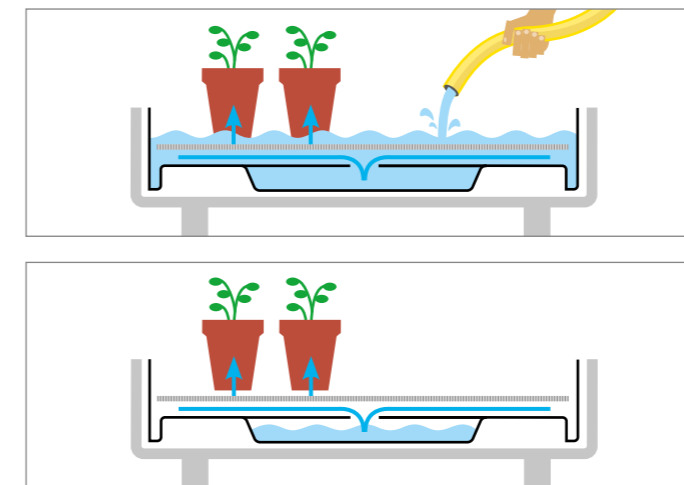
## Sales tables with capillary irrigation and "2-in-1" irrigation tray

Height of all tables 800 mm – other heights on request

Dimensions Internal dimensions of trays L x W in mm	"2-in-1" sales table type DE mobile Order no.	"2-in-1" sales table type DE stationary Order no.	"2-in-1" sales table type HK mobile Order no.	"2-in-1" sales table type HK stationary Order no.
1,930 x 940	G2 1450 D0L 125	G2 1450 D00 000	G2 1450 HKL 125	G2 1450 HK0 000
2,500 x 1,200	G2 1445 D0L 125	G2 1445 D00 000	G2 1445 HKL 125	G2 1445 HK0 000
External dimensions of table = internal dimensions of trays L/W + 50 mm			External dimensions of table = internal dimensions of trays L/W + 30 mm	

The irrigation mat and absorbent wicks of the "2-in-1" sales table should be renewed once a year.  
The following spare sets are available:

Spare set to fit on "2-in-1" sales table with internal dimensions of tray L x W in mm	Set comprising	Order no.
1,930 x 940	1 irrigation mat and 4 absorbent wicks	G9 0479.1 MDS
2,500 x 1,200	1 irrigation mat and 5 absorbent wicks	G9 0479.2 MDS



### And this is how easily it works:

1. Simply fill the tray with water using the hose as usual until the water has accumulated visibly.
2. Allow the plants to draw water.
3. After for example 30 minutes open the water outlet of the large tray and empty the backwater.
4. The water tank remains filled nevertheless and it supplies the plants sustainably with water by means of capillary irrigation for up to a week, depending on the weather.

#### Your advantage:

- fewer plants lost
- lower personnel costs
- no watering at weekends and on public holidays
- the tables can be placed variably because no connections, hoses etc. are required

Do you have any questions? – Call us: Tel. +49 (0)7343/9227-0; we would be delighted to advise you.

Protected from imitation by patent

## DSWS-type aquatic plant table

### The aquatic plant table consists of:

#### DSWS-type aluminium sales table, stationary

Aquatic plant table  
L x W x H = 2,000 x 1,460 x 400 mm  
without trays  
reinforced substructure, not foldable  
6 table legs with floor-compensation screws

Order no.: G8 1436 DS0 000

#### Set of aluminium aquatic plant trays

for DSWS-type aquatic plant table comprising  
4 aluminium trays measuring 980 x 710 x 370 mm  
deburred all round, without a drain

Order no.: G8 1436 W40 000



## Sales bed and anti-wind plant holders

### Sales bed

Our attractive sales bed which is used above all for nursery merchandise; we supply it as standard with watertight plastic trays with drain. Here, too, the plastic trays are not bonded, they are produced from a single piece. Further sizes and versions with aluminium irrigation trays on request.

External dimensions: L x W x H = 2,090 x 1,050 x 260 mm  
Internal dimensions: L x W = 2,040 x 1,000 mm

Order no.: G2 1462 DEF 000

External dimensions: L x W x H = 2,550 x 1,250 x 260 mm  
Internal dimensions: L x W = 2,500 x 1,200 mm

Order no.: G2 1463 DEF 000

Wind protectors not included in scope of supply.



### Anti-wind plant holders

With aluminium anti-wind plant holders you give your plants safe support. Per bracket you require two carriages which are drawn onto two rails per table/bed. The length of the anti-wind plant holders must correspond to the width (internal dimension) of the tray lying in the table/bed. The length of the rails must correspond to the width (internal dimension) of the tray lying in the table/bed. The brackets can be shifted as required, i.e. the distance between them can be changed by hand at random.

#### Bracket

Dimensions	Order no.:
Length 1,000 mm, height 500 mm	G8 0544 050
Length 1,000 mm, height 750 mm	G8 0544 075
Length 1,000 mm, height 1,000 mm	G8 0544 100
Length 1,200 mm, height 500 mm	G8 0547 050
Length 1,200 mm, height 750 mm	G8 0547 075
Length 1,200 mm, height 1,000 mm	G8 0547 100
Length 1,250 mm, height 500 mm	G8 0545 050
Length 1,250 mm, height 750 mm	G8 0545 075
Length 1,250 mm, height 1,000 mm	G8 0545 100
Length 1,500 mm, height 500 mm	G8 0546 050
Length 1,500 mm, height 750 mm	G8 0546 075
Length 1,500 mm, height 1,000 mm	G8 0546 100

Aluminium anti-wind plant holder rail (please state length when ordering)  
Order no.: G8 0540 000

Aluminium anti-wind plant holder carriage (2 are required per bracket)  
Order no.: G8 0542 000



### Tiered table

#### DEWS-C tiered table

The practical DEWS-C tiered sales table ensures an attractive presentation of merchandise and is supplied complete with irrigation tray with drain. Available in different heights.

External dimensions: L x W x H = 1,310 x 605 x 650 mm  
Internal dimensions: L x W = 1,250 x 550 mm

Order no.: G2 1461 DW0 000



## Aluminium stacking tables



### Aluminium stacking tables with different dimensions

stationary * L x W x H	Order no.:
1,280 x 850 x 160 mm	G2 1479 W10 000
1,280 x 850 x 300 mm	G2 1479 W20 000
1,280 x 850 x 450 mm	G2 1479 W30 000
1,280 x 850 x 600 mm	G2 1479 W40 000

\* Feet with floor-compensation screws

mobile ** L x W x H	Order no.:
1,280 x 850 x 300 mm	G2 1479 W1L 125
1,280 x 850 x 440 mm	G2 1479 W2L 125
1,280 x 850 x 590 mm	G2 1479 W3L 125
1,280 x 850 x 740 mm	G2 1479 W4L 125

\*\* 4 castors, 125 mm, solid rubber, grey, 2 locking brakes



**Plastic tap to be screwed into the drain**  
Order no.: G6 0496 000

**2-ply synthetic irrigation mat backed with woven fabric**  
Order no.: G9 0448 MRZ 08

## Aluminium top-up tables

Aluminium top-up tables can be used both on top of sales tables or as independent sales units. The inserted irrigation tray is made from recyclable plastic with grooves and a plug for the drain.



Aluminium stationary top-up tables L x W x H	Order no.:
430 x 430 x 400 mm	G8 1475 WTO 000
630 x 430 x 400 mm	G8 1476 WTO 000
1,270 x 430 x 400 mm	G8 1477 WTO 000
1,270 x 850 x 400 mm	G8 1478 WTO 000

Other table heights on request.



## Accessories for sales tables



**Height adjustment**  
upwards by up to 140 mm  
in an approximately 12 mm grid with screw and butterfly nut  
complete for 4 table legs

Order no.: G0 0499 RHV



**Flower-basket holder**  
Hot-dip galvanised steel with plastic terminal socket  
Rake radius approx. 500 / 500 mm  
Rake distance approx. 400 mm  
height can be adjusted from approx. 500 to 1,200 mm from table top  
presents flower baskets optimally  
Order no.: G4 0491 000

**Bracket with a lug and safety plug**  
2 brackets are required to fix a flower basket holder onto the table.  
Order no.: G4 0491 S00



**Aluminium advertising panel**  
Panel with slide-in edge for the vertical DIN A5 format

Advertising panel 2,000 x 216 x 1,5 mm  
Order no.: G8 0454 000

Advertising panel 2,500 x 216 x 1,5 mm  
Order no.: G8 0455 000

T-support for aluminium advertising panel  
Length of base: 800 mm  
Base height: 700 mm  
Order no.: G8 0456 000

For further information see the "Labelling Systems" prospectus



**Irrigation mat**  
2-layer synthetic  
backed with woven fabric  
cut to fit your sales tables  
also available off the roll

Refer to the "Sales aids and irrigation trays" prospectus



[www.kahler.de](http://www.kahler.de)



**Germany**

Kahler GmbH  
Werkring 6  
D-89290 Buch

Tel. +49 (0)7343 9227-0  
Fax +49 (0)7343 9227-79  
E-mail [info@kahler.de](mailto:info@kahler.de)  
Web [www.kahler.de](http://www.kahler.de)

**Switzerland**

HERS GmbH  
Industriestrasse 17  
CH-4415 Lausen

Tel. +41 (0)61 90699-99  
E-mail [info@hers.ch](mailto:info@hers.ch)  
Web [www.hers.ch](http://www.hers.ch)