

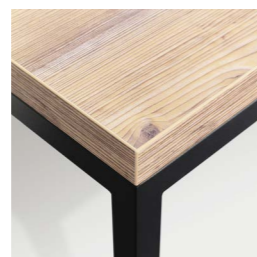
Made in  
Germany

**Kahler**

For flowers and  
plants, fruit  
and vegetables  
and and and...



# copenhagen



#### Presentation table

- Table frame made of plastic-coated steel  
RAL 9005 black fine structure
- Tabletop 38 mm decor panel "copenhagen"

W x D x H = 680 x 680 x 450 mm

Article no.: 103397

W x D x H = 680 x 680 x 650 mm

Article no.: 103396

W x D x H = 680 x 680 x 850 mm

Article no.: 103395

## copenhagen 3 Presentation table and shelf top



1 SET = 3 pieces

#### Plastic irrigation tray

for placing on table top or shelf

W x D x H = 500 x 350 x 15 mm

Article no.: 103181



#### Presentation table

- Table frame made of plastic-coated steel  
RAL 9005 black fine structure
- Tabletop 38 mm decor panel "copenhagen"

W x D x H = 1.100 x 1.100 x 650 mm

Article no.: 103398

#### Shelf top

- Frame made of 15 x 15 mm  
plastic-coated steel tube  
RAL 9005 black fine structure
- 3 shelves made of sheet steel  
Tier spacing 400 mm

W x D x H = 515 x 383 x 850 mm

Article no.: 103399

## copenhagen 2 Presentation tables





**Presentation table**

- Table frame made of plastic-coated steel  
RAL 9005 black fine structure
- Tabletop 38 mm decor panel "copenhagen"

W x D x H = 2.400 x 1.100 x 740 mm  
Article no.: 103392

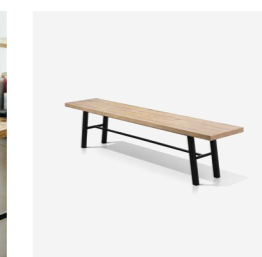
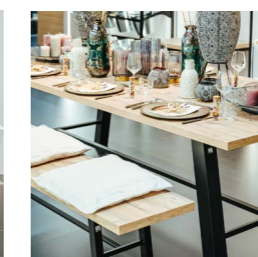
**Front table**

- Table frame made of plastic-coated steel  
RAL 9005 black fine structure
- Tabletop 38 mm decor panel "copenhagen"

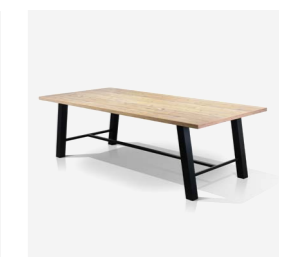
W x D x H = 2.000 x 400 x 450 mm  
Article no.: 103394



# **copenhagen 1** **Presentation table** **and front table**



Front table



Presentation table

# copenhagen 5 Shelf



- Shelf with wooden tiers**
- Frame made of plastic-coated steel tube 30 x 30 mm RAL 9005 black fine structure
  - 4 adjustable wooden shelves 1270 x 420 mm made of 38 mm decor panel "copenhagen"
  - Shelf feet with floor leveling screws

W x D x H = 1.360 x 470 x 2.080 mm  
Article no.: 103401

- Shelf with trays**
- Frame made of plastic-coated steel tube 30 x 30 mm RAL 9005 black fine structure
  - 4 adjustable tier frames without rings incl. 4 irrigation trays 1,260 x 420 mm
  - Shelf feet with floor leveling screws

W x D x H = 1.360 x 470 x 2.080 mm  
Article no.: 103402

- Shelf with zinc buckets**
- Frame made of plastic-coated steel tube 30 x 30 mm RAL 9005 black fine structure
  - 3 adjustable shelf frames, each with 4 welded rings Ø 250 mm incl. 12 zinc buckets height 260 mm
  - Shelf feet with floor leveling screws

W x D x H = 1.360 x 470 x 2.080 mm  
Article no.: 103403



Shelf  
with wooden tiers



Shelf  
with zinc buckets



Shelf  
with trays



Shelf with back panel  
decor "copenhagen"



Shelf with back panel  
decor black fine structure



Shelf  
with base podium

## Equipment and accessories



**Base podium**  
Height 120 mm  
Article no.: 103406



**Base podium**  
Height 400 mm  
Article no.: 103407



**Wooden tier**  
made of 38 mm decor panel  
incl. brackets  
Article no.: 103625



**Wooden inlay**  
made of 19 mm decor panel  
for tier frames  
Article no.: 103405



**Tier frame** with inserted  
irrigation tray  
1.260 x 420 mm  
Article no.: 103626



**Tier frame** with  
4 welded rings  
Ø 250 mm  
Article no.: 103627



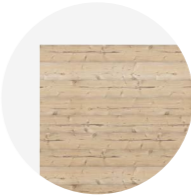
1 SET = 5 pieces  
**irrigation trays**  
1.260 x 420 x 45 mm  
Article no.: 103639



1 SET = 5 pieces  
**irrigation mats 2-ply**,  
1.260 x 420 mm  
Article no.: 103640



**LED lighting**  
Article no.: 103404



**Shelf back panel**  
made of 8 mm decor panel  
"copenhagen",  
incl. fastening  
Article no.: 103637



**Shelf back panel**  
made of 8 mm decor panel  
black fine pearl  
incl. fastening  
Article no.: 103638



1 SET = 10 pieces  
**Zinc bucket**  
Height 260 mm,  
Ø 280/200 mm  
Article no.: 102483

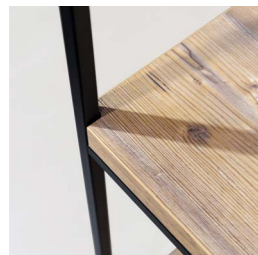


## copenhagen 4 Column shelf

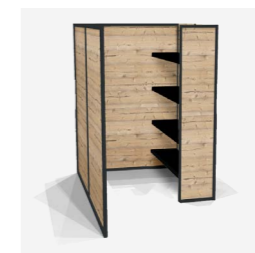
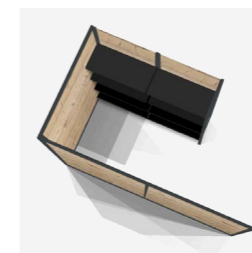
### Column shelf

- Frame made of 20 x 20 mm plastic-coated steel tube RAL 9005 black fine structure
- 3 shelves made of 38 mm decor panel "copenhagen"  
Tier spacing 640 mm

W x D x H = 600 x 600 x 2.100 mm  
Article no.: 103400



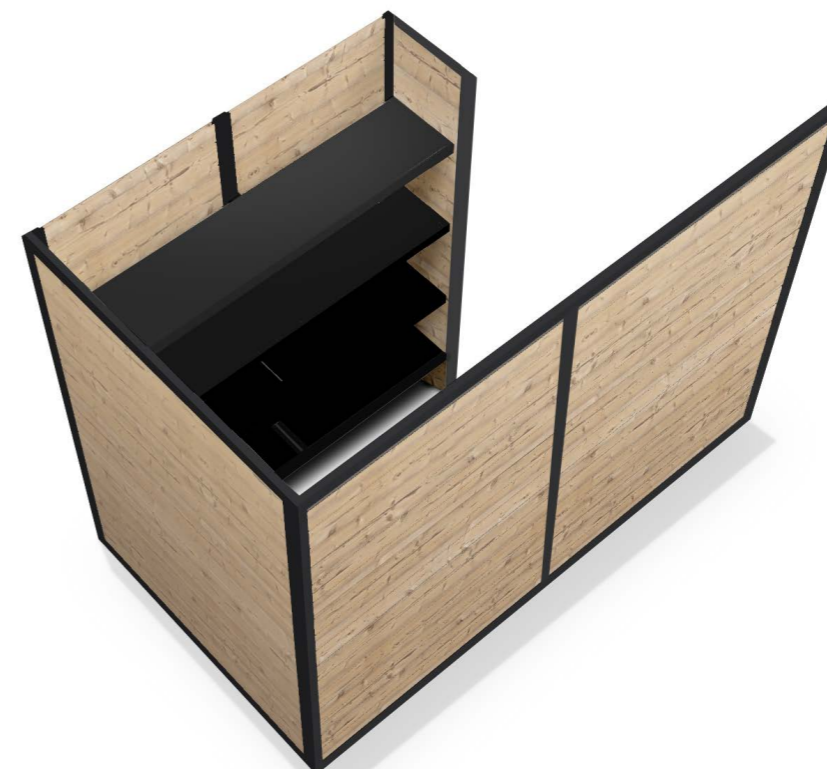
## copenhagen 9 Hand bearing



### Hand bearing consisting of:

- 2 rear panels W x H = 1,060 x 1,650 mm
- 1 side panel W x H = 1,145 x 1,650 mm
- 1 side panel W x H = 330 x 1,650 mm
- 2 shelves W x D x H = 670 x 330 x 1,650 mm  
with each 4 wooden shelves 19 mm decor black fine pearl
- Metal parts plastic-coated RAL 9005 black fine structure
- Back panels / side panels made of decor panel "copenhagen"

W x D x H = 1.400 / 2.120 x 330 / 1.180 x 1.650 mm  
Article no.: 103634





pull-out  
waste container



Integrated, retractable  
multiple socket



Top unit



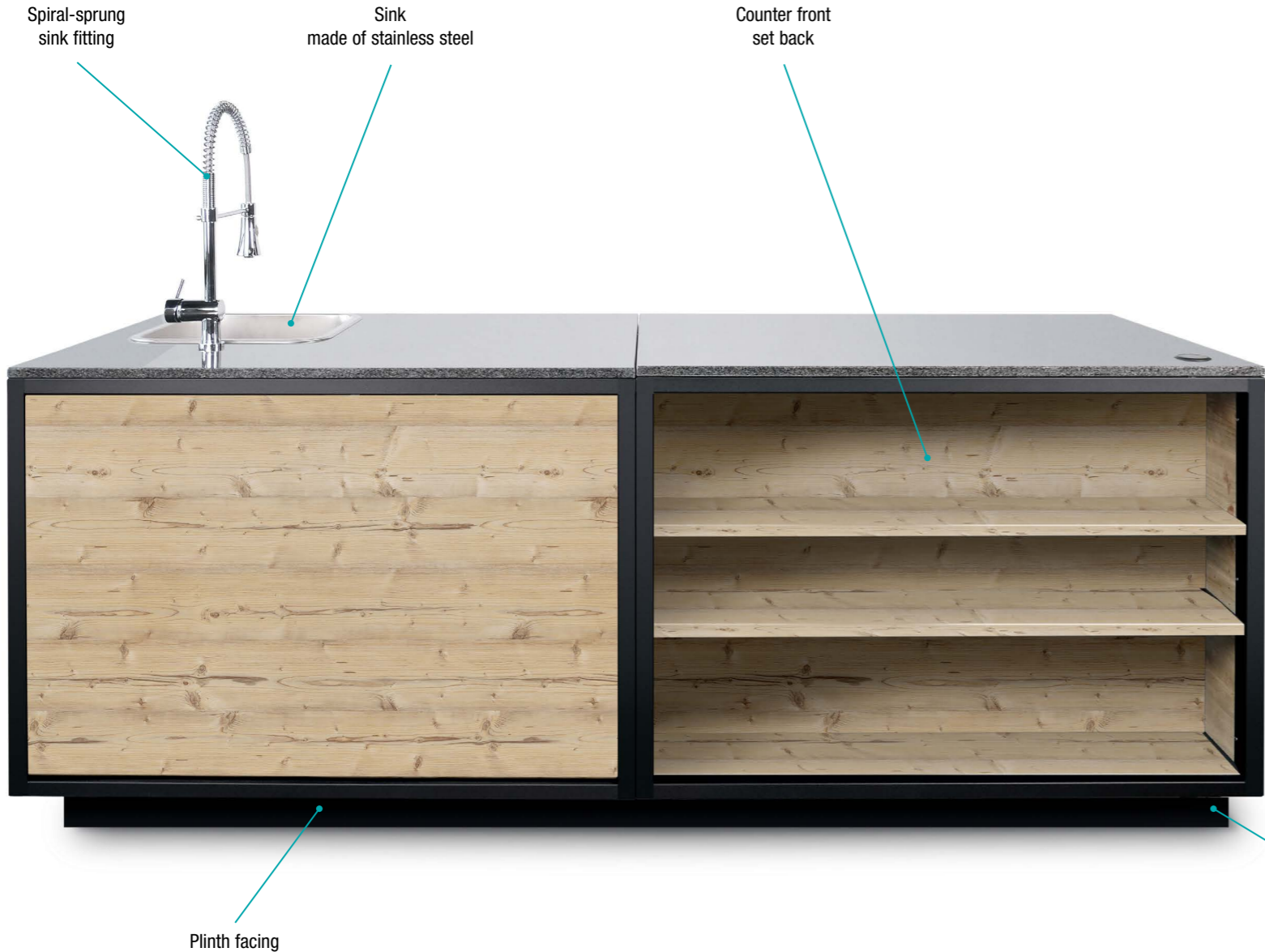
Doors and  
drawers



Paper dispenser



# copenhagen 9 Customer counter



- Customer counter**
- made of plastic-coated steel RAL 9005 black fine structure
  - clad with decor panel "copenhagen"
  - Worktop granite Nero Impala
  - Interior in black fine pearl wood decor
  - 1 full-length storage compartment, height-adjustable

W x D x H = 1.200 x 700 x 940 mm

- Stationary version**
- Feet with unscrewable floor leveling screws
- Article no.: 103628

- Mobile version**
- 4 swivel castors 80 mm, 2 locking brakes
- Article no.: 103629

- Quarter-circle counter**
- made of plastic-coated steel RAL 9005 black fine structure
  - clad with decor panel "copenhagen"
  - Worktop granite Nero Impala
  - 1 storage compartment made of multiplex board decor "copenhagen"

W x D x H = 700 x 700 x 940 mm

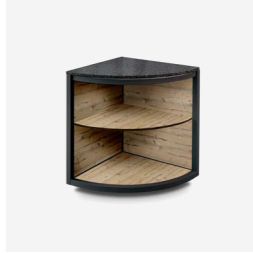
- Stationary version**
- Feet with unscrewable floor leveling screws
- Article no.: 103630

- Mobile version**
- 4 swivel castors 80 mm, 2 locking brakes
- Article no.: 103631

**Equipment and accessories**  
For detailed information please see pages 14-15



Customer counter



Quarter-circle counter



Also available in  
mobile version

# copenhagen 9

## Working counter

### Working counter

- made of plastic-coated steel RAL 9005 black fine structure
- clad with decor panel "copenhagen"
- Worktop granite Nero Impala
- with raised rear wall - height 1.650 mm
- Interior in wood decor black fine pearl:  
1 full-length storage compartment, height-adjustable

W x D x H = 1.200 x 700 x 940 / 1.650 mm

### Stationary version

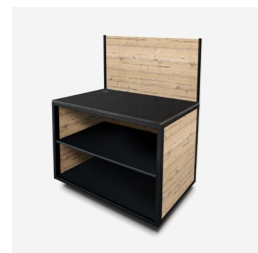
- Feet with unscrewable floor leveling screws
- Article no.: 103632

### Mobile version

- 4 swivel castors 80 mm, 2 locking brakes
- Article no.: 103633

### Equipment and accessories

For detailed information please see pages 14-15



Working counter

Equipment (see pages 14-15)



pull-out  
waste container



Sink  
made of stainless steel



Paper dispenser



Doors and  
drawers

Cable breakthrough

Paper dispenser

Drawers with  
stainless steel handle

Spiral-sprung  
sink fitting

Sink  
made of stainless steel



Plinth facing

pull-out  
waste container



Also available in  
mobile version

# copenhagen 9 Equipment



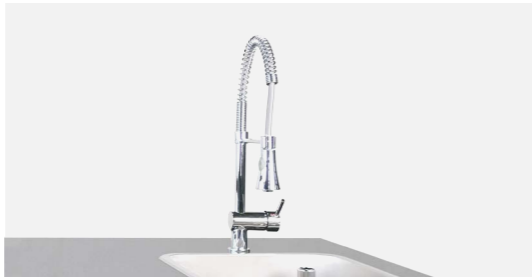
**Top unit for customer counter**  
made of multiplex board 30 mm decor "copenhagen"  
Article no.: 103642



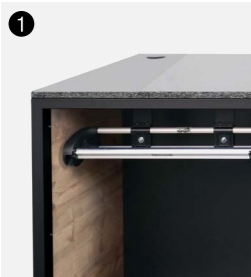
**Integrated multiple socket**  
Brushed stainless steel surface  
integrated in granite top  
retractable  
Article no.: 103564



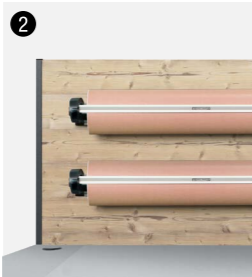
**Sink**  
made of stainless steel with 20 mm outer rim,  
usable dimensions L 400 x W 400 x H 250 mm  
incl. washbasin facing  
Article no.: 101683



**Spiral-sprung sink fitting**  
with brushed mixer tap  
incl. hole for tap in the granite top  
  
for high-pressure connection Article no.: 101042    for low-pressure connection Article no.: 103619



**1 Paper dispenser** incl. holder for counter substructure  
for 500 mm roll  
Article no.: 101047



**2 Paper dispenser** incl. holder for counter substructure  
for 800 mm roll  
Article no.: 101048  
  
**2 Paper dispenser** incl. bracket for wall mounting  
for 500 mm roll  
Article no.: 101049    for 800 mm roll  
Article no.: 101050



**1 Pull-out waste container** made of galvanized sheet  
steel, front plastic-coated RAL 9005 black fine structure  
Inner dimension W x D x H = 400 x 550 x 360/560 mm  
Article no.: 103641



**2 Separator for waste containers**, stainless steel, can  
be folded-up, for hanging 2 bin liners  
Article no.: 103209



**Drawer unit with 2 drawers**  
Each drawer with stainless steel handle,  
mounted on ball-bearings, full-extension runners and  
drawer faceplate made of black decor panel  
Usable size per drawer W x D = 400 x 410 mm  
Article no.: 103658



**Lock for 1 drawer**  
Article no.: 103659



**Door** made of wood decor 19 mm black fine pearl  
with stainless steel handle  
  
Hinged on the right Article no.: 103660    Hinged on the left Article no.: 103661



**Plinth facing** for stationary counter  
Decorative panel black fine pearl, ABS glued  
Price per running meter  
Article no.: 101817



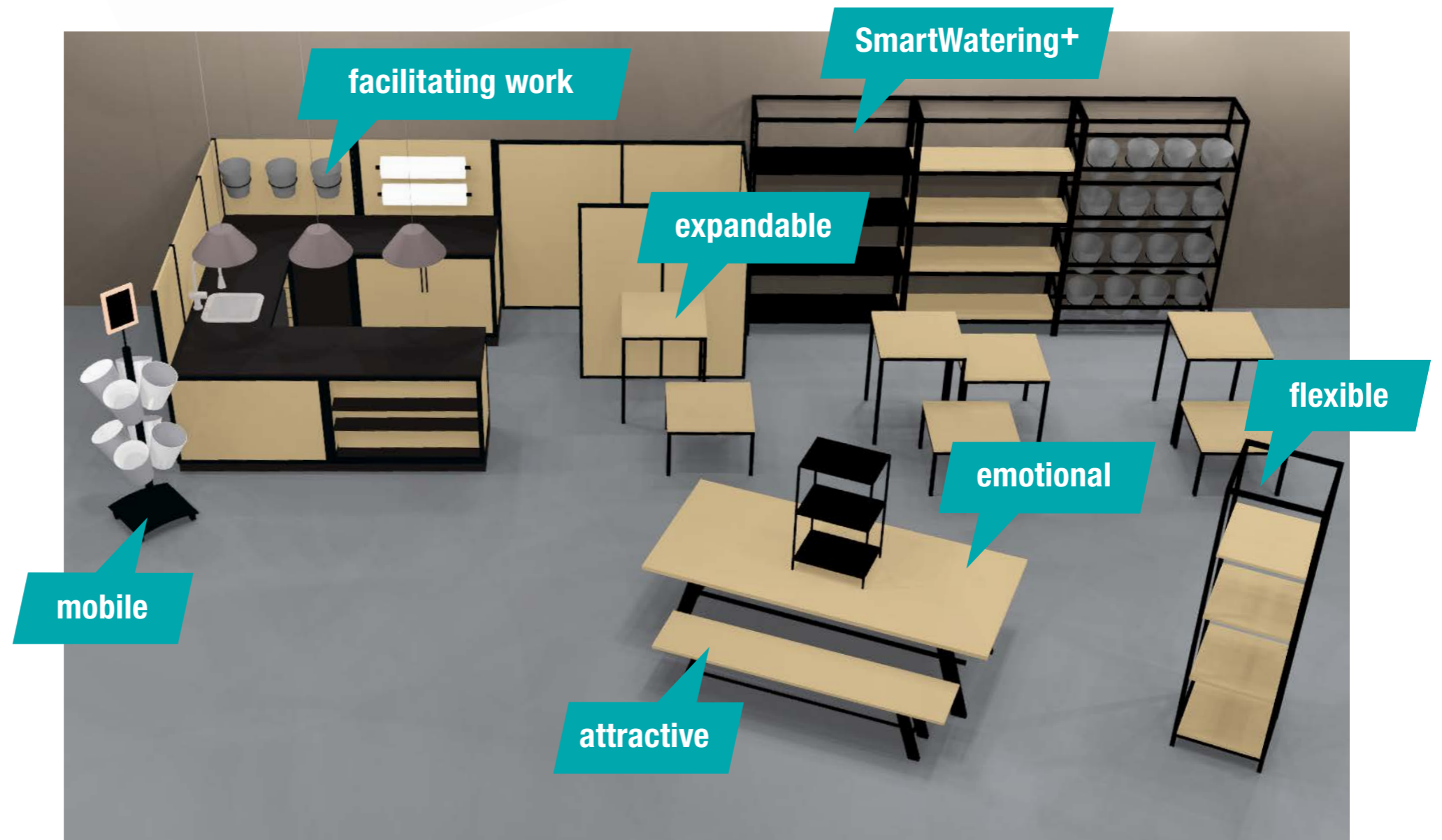
**Recessed counter front**  
with 2 height-adjustable storage compartments  
made of multiplex panels 19 mm  
decor "copenhagen"  
Depth 190 mm  
Article no.: 103662



**LED lighting** for recessed counter front  
3 LED strips, length 1,100 mm  
incl. power supply unit mounted ready to plug in  
Article no.: 103663

# 3D planning for plant stores

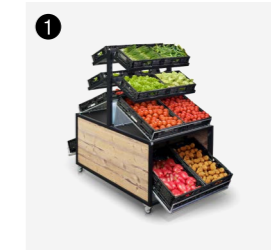
We take over  
the planning  
of your complete  
plant store





# copenhagen 7

## Central placement presentation stand



Narrow version



Wide version

- made of plastic-coated steel RAL 9005 black fine structure
- clad with decor panel "copenhagen"
- 4 swivel castors 75 mm, 2 holding brakes

### 1 Narrow version

- 4 height-adjustable tier frames with plastic cover for each 2 FV crates 30 x 40 cm
- 2 slanted shelf inserts with wire mesh made from electrogalvanised steel for each 2 FV crates 60 x 40 cm
- 2 height-adjustable wire-mesh tiers for each 2 FV crates 60 x 40 cm

W x D x H = 850 x 1.760 x 1.700 mm  
Article no.: 103543

### 3 Awning for central placement presentation stand incl. awning cloth Dralon black (height top edge of awning 2,100 mm)

Length 850 mm for awning for narrow version  
Article no.: 103613

Length 1.250 mm for awning for wide version  
Article no.: 103614

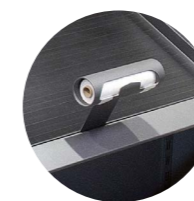
### 2 Wide version

- 4 height-adjustable tier frames with plastic cover for each 3 FV crates 30 x 40 cm
- 2 slanted shelf inserts with wire mesh made from electrogalvanised steel for each 3 FV crates 60 x 40 cm
- 2 height-adjustable wire-mesh tiers for each 3 FV crates 60 x 40 cm

W x D x H = 1.250 x 1.760 x 1.700 mm  
Article no.: 103610



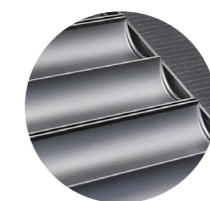
Inclined herb tray  
600 x 400 mm



Holder for  
knot bag



Herb vase for  
cut herbs



Sales modules  
for bananas



LED lighting



Slanted shelf insert with wire mesh, can be folded

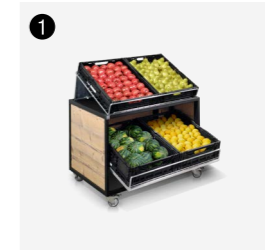


LED lighting

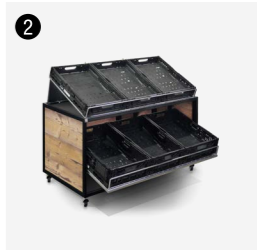


copenhagen 7 combined  
with copenhagen 6

# copenhagen 6 Presentation module



Narrow version



Wide version

- made of plastic-coated steel RAL 9005 black fine structure
- clad with decor panel "copenhagen"
- 4 swivel castors 75 mm, 2 holding brakes

## 1 Narrow version

- 1 slanted shelf insert with wire mesh made from electrogalvanised steel for each 2 FV crates 60 x 40 cm
- 1 height-adjustable wire-mesh tier for each 2 FV crates 60 x 40 cm

W x D x H = 850 x 860 x 790 mm  
(Height when latticed incliner is folded up = 920 mm)  
Article no.: 103542

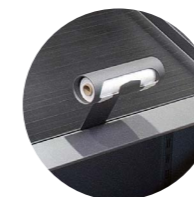
## 2 Wide version

- 1 slanted shelf insert with wire mesh made from electrogalvanised steel for each 3 FV crates 60 x 40 cm
- 1 height-adjustable wire-mesh tier for each 3 FV crates 60 x 40 cm

W x D x H = 1.250 x 860 x 790 mm  
(Height when latticed incliner is folded up = 920 mm)  
Article no.: 103617



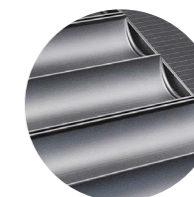
Inclined herb tray  
600 x 400 mm



Holder for  
knot bag



Herb vase for  
cut herbs



Sales modules  
for bananas



LED lighting



Integrated, retractable multiple socket



LED lighting



pull-out waste container



Integrated water supply



Stainless steel sink

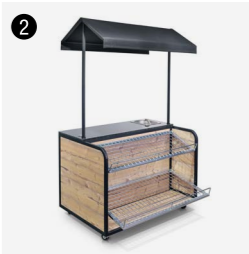


copenhagen 8 combined with copenhagen 6

# copenhagen 8 Service counter



Service counter without awning



Service counter with awning



- 1 Service counter without awning**
- made of plastic-coated steel RAL 9005 black fine structure
  - Counter cladded with decor panel “copenhagen”
  - Worktop Granit Nero Impala
  - Counter front with
    - 1 lattice shelf for 2 FV crates 60 x 40 cm
    - 1 lattice shelf for 3 FV crates 60 x 40 cm
  - Interior fittings:
    - 1 full-length, height-adjustable storage compartment in fine pearl black wood decor
    - 4 swivel castors 80 mm, 2 holding brakes

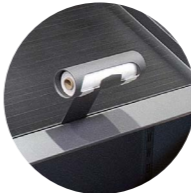
W x D x H = 1.360 x 1.130 x 1.000 mm  
Article no.: 103568

- 2 Service counter with awning incl. awning cloth Dralon black**
- made of plastic-coated steel RAL 9005 black fine structure
  - Counter cladded with decor panel “copenhagen”
  - Worktop Granite Nero Impala
  - Counter front with
    - 1 lattice shelf for 2 FV crates 60 x 40 cm
    - 1 lattice shelf for 3 FV crates 60 x 40 cm
  - Interior fittings:
    - 1 full-length, height-adjustable storage compartment in fine pearl black wood decor
    - 4 swivel castors 80 mm, 2 holding brakes

W x D x H = 1.360 x 1.130 x 1.000 mm  
(Height top edge of awning = 2,100 mm)  
Article no.: 103544



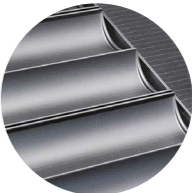
Inclined herb tray 600 x 400 mm



Holder for knot bag



Herb vase for cut herbs



Sales modules for bananas



LED lighting

# copenhagen 6 und 7 Equipment



**LED lighting for copenhagen 6 presentation module narrow**  
with 1 LED strip length 800 mm  
incl. power supply mounted ready to plug in  
Article no.: 103567



**LED lighting for copenhagen 6 presentation module wide**  
with 1 LED strip, length 1.100 mm  
incl. power supply mounted ready to plug in  
Article no.: 103618



**LED lighting for copenhagen 7 central placement presentation stand narrow**  
with 6 LED strips, length 800 mm  
incl. power supply mounted ready to plug in  
Article no.: 103611



**LED lighting for copenhagen 7 central placement presentation stand wide**  
with 6 LED strips, length 1.100 mm  
incl. power supply mounted ready to plug in  
Article no.: 103612



**LED lighting for awning on copenhagen 7 central placement presentation stand narrow**  
incl. power supply mounted ready to plug in  
Article no.: 103615



**LED lighting for awning on copenhagen 7 central placement presentation stand wide**  
incl. power supply mounted ready to plug in  
Article no.: 103616

# copenhagen 8 Equipment



**LED lighting for service counter**  
with 1 LED strip length 1.200 mm in the front area goods (without awning lighting)  
incl. power supply mounted ready to plug in  
Article no.: 103565



**LED lighting for service counter awning**  
incl. power supply mounted ready to plug in  
Article no.: 103566



**Holder for knot bag**  
made of plastic-coated steel tube  
RAL 9005 black fine structure  
Article no.: 103418



**Integrated water supply**  
Stainless steel washbasin with tap for service counter  
incl. decentralized water supply with battery operation  
23 liter fresh water tank  
23 liter waste water tank  
incl. door with stainless steel fitting  
Article no.: 103562



**Pull-out waste container**  
with a capacity of 30 liters  
for service counter  
incl. cladding and folding mechanism  
Article no.: 103563



**Integrated multiple socket**  
Brushed stainless steel surface  
integrated in granite top  
retractable  
Article no.: 103564



## copenhagen 10 Self-service counter



### Self-service counter stationary for smoothies, juices, etc.

- made of plastic-coated steel RAL 9005 black fine structure
- Counter clad with decor panel "copenhagen"
- Worktop Granite Nero Impala
- 3 cable feedthroughs

Interior equipment in black fine pearl wood decor

- 1 bottom plate
- 2 dividers
- 6 height-adjustable storage compartments
- Feet with unscrewable floor leveling screws

W x D x H = 2.000 x 700 x 1.000 mm  
Article no.: 103620

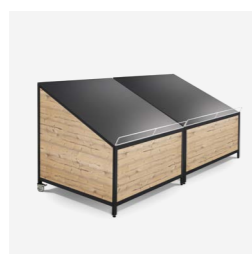
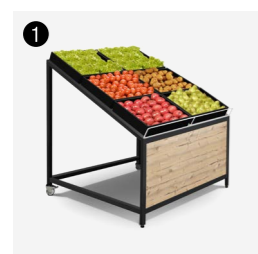
## copenhagen 10 Rear wall for self-service counter



**Rear wall for self-service counter**  
removable  
with slide-in edge for inserting  
from decor panel 8 mm "copenhagen"

W x D = 450 x 1.500 mm  
(visible surface above the worktop H = 670 mm)  
Article no.: 103621





## copenhagen 11 Inclined fruit and vegetable display

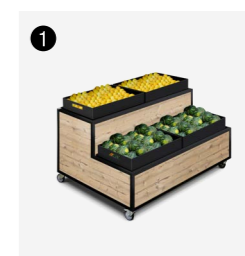
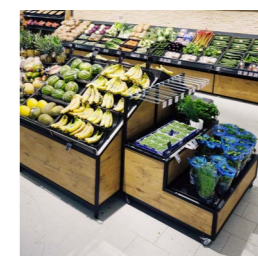
### ① Inclined fruit and vegetable display without side and rear panels

Usable area stainless steel 1,200 x 1,200 mm  
with railing for price labeling  
made of 10 mm stainless steel round bar  
Base frame made of plastic-coated steel  
RAL 9005 black fine structure  
incl. front panel decor panel „copenhagen“  
2 castors 75 mm at the back, 2 adjustable feet at the front

W x D x H = 1.200 x 1.100 x 670/1.200 mm  
Article no.: 103622

**Side wall decor panel “copenhagen”**  
fully assembled  
Article no.: 103664

**Rear wall decor panel “copenhagen”**  
fully assembled  
Article no.: 103665



## copenhagen 12 Stair-type sales stand for herbs

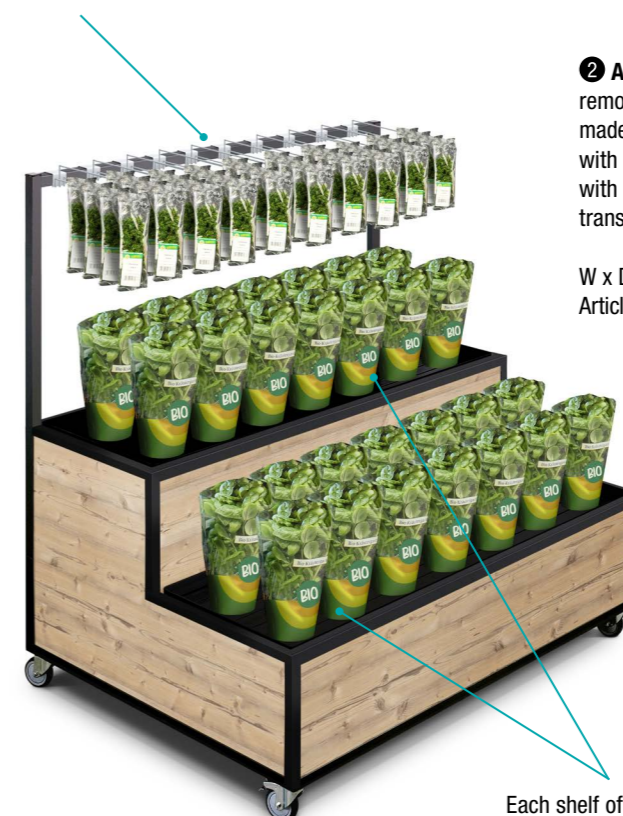
**① Stair-type sales stand for herbs 2-stage**  
made of plastic-coated steel RAL 9005 black fine structure  
cladded with decor panel “copenhagen”  
2 removable hygiene trays 1.260 x 420 mm  
made of black plastic  
4 swivel castors 75 mm, 2 holding brakes

W x D x H = 1.320 x 942 x 660 mm  
Article no.: 103623

**② Attachment for stair-type sales stand for herbs**  
removable  
made of plastic-coated steel RAL 9005 black fine structure  
with 10 galvanized blister double hooks 300 mm  
with above price holder incl. swinging price tag  
transparent, length 70 mm, insertion height 39 mm

W x D = 1.320 x 700 mm  
Article no.: 103624

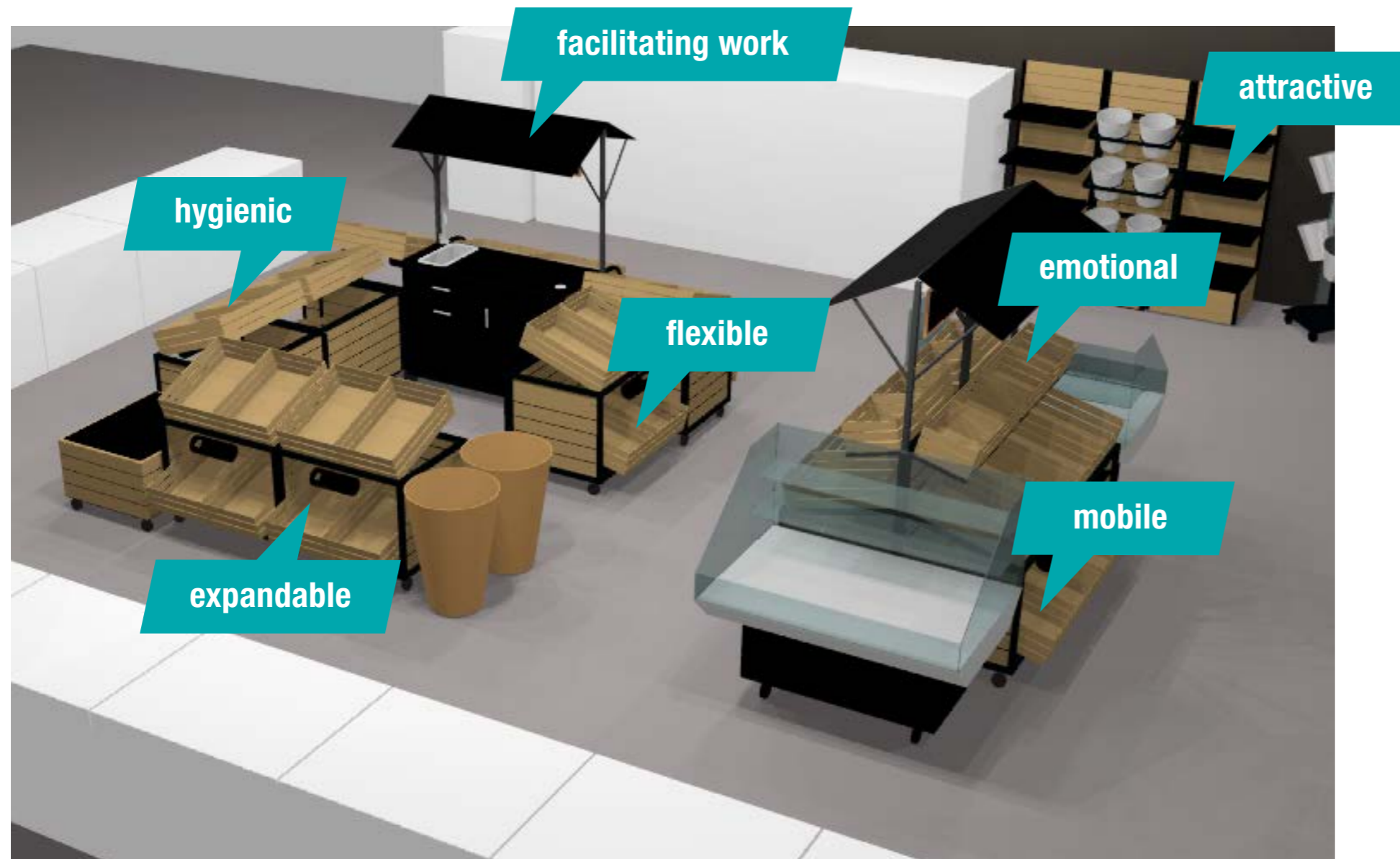
**② Attachment for stair-type sales stand for herbs**



Each shelf offers space  
for 4 herb trays  
or 2 FV crates 60 x 40 cm

# 3D planning for fruit and vegetables

We take over  
the planning  
of your fruit and  
vegetable presentation



# copenhagen

## Accessories



1 SET = 2 pieces  
**Cover for FV boxes**  
 for 40 x 30 cm crates      for 60 x 40 cm crates  
 404 x 303 x 40 mm      604 x 403 x 40 mm  
 Article no.: 103488      Article no.: 103489



1 SET = 2 pieces  
**Cover for FV boxes with printed cover**  
 for 40 x 30 cm crates      for 60 x 40 cm crates  
 404 x 303 x 40 mm      604 x 403 x 40 mm  
 on request      on request



1 SET = 10 pieces  
**Zinc bucket**  
 Height 260 mm, Ø 280/200 mm  
 Article no.: 102483



1 SET = 4 pieces  
**Sales modules for bananas**  
 with 2 waves, black plastic  
 600 x 400 mm  
 Article no.: 102482



**Inclined herb tray made of plastic**  
 for use in fruit and vegetable slopes  
 Adjustable angle of inclination for different slopes  
 W x D = 600 x 400 mm  
 Article no.: 101783



1 SET = 2 pieces  
**Plastic herb vases**  
 with stainless steel dividing grid  
 W x D x H = 200 x 150 x 125 mm  
 Article no.: 101805



1 SET = 4 pieces  
**Sales modules for bananas**  
 with 3 waves, black plastic  
 400 x 600 mm  
 Article no.: 103135



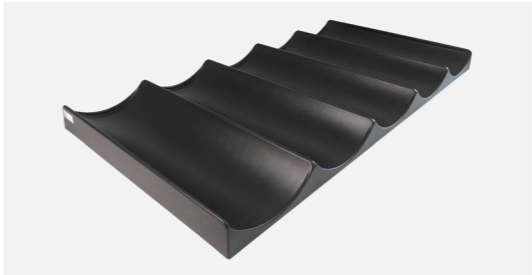
1 SET = 2 pieces  
**Sales modules for bananas**  
 with 3 waves, black plastic  
 600 x 800 mm  
 Article no.: 103136



**Holder for knot bag**  
 made of tubular steel, plastic-coated  
 RAL 9005 black fine structure  
 Article no.: 103418



**Advertising sign**  
 with imitation slate  
 incl. holders (2 hooks for hanging)  
 for DIN A4      for DIN A5  
 Article no.: 103482      Article no.: 102024



1 SET = 2 pieces  
**Sales modules for bananas**  
 with 5 waves, black plastic  
 600 x 1.200 mm  
 Article no.: 103137



For large quantities, sales modules for bananas can be supplied individually printed.

## Notes

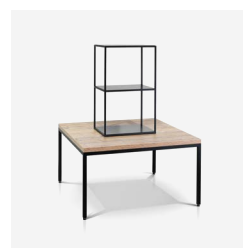
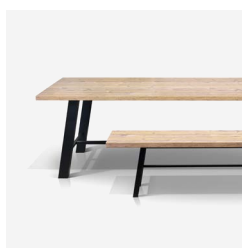
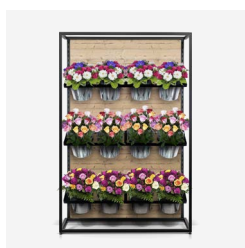
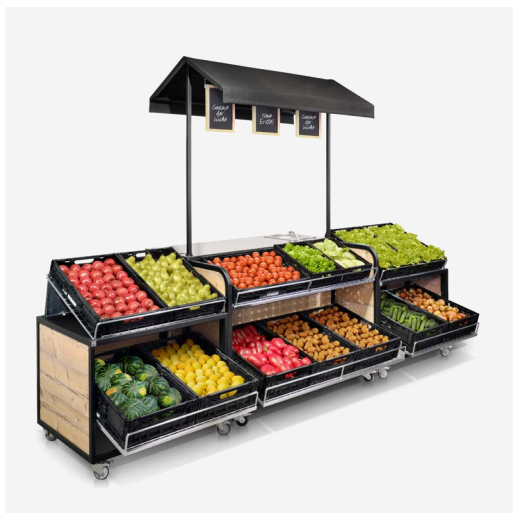
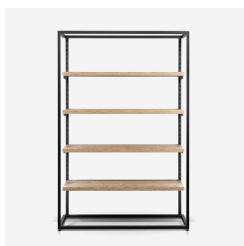
[illegible]

## Notes

[illegible]

# Kahler

**www.kahler.de**



## Germany

Kahler GmbH  
Werkring 6  
89290 Buch

Tel +49 (0)7343 9227-0  
Fax +49 (0)7343 9227-79  
info@kahler.de  
www.kahler.de

## Switzerland

HERS GmbH  
Industriestrasse 17  
4415 Lausen

Tel +41 (0)61 90699-99  
info@hers.ch  
www.hers.ch